

**HASIL RISET**



**FLOLIS**  
PROPOLIS FLUORIDE

---

**SEBAGAI PENCEGAH KARIES**

---

**SRI ANGY SOEKANTO**  
DEPARTEMEN ORAL BIOLOGY, FAKULTAS KEDOKTERAN GIGI  
UNIVERSITAS INDONESIA



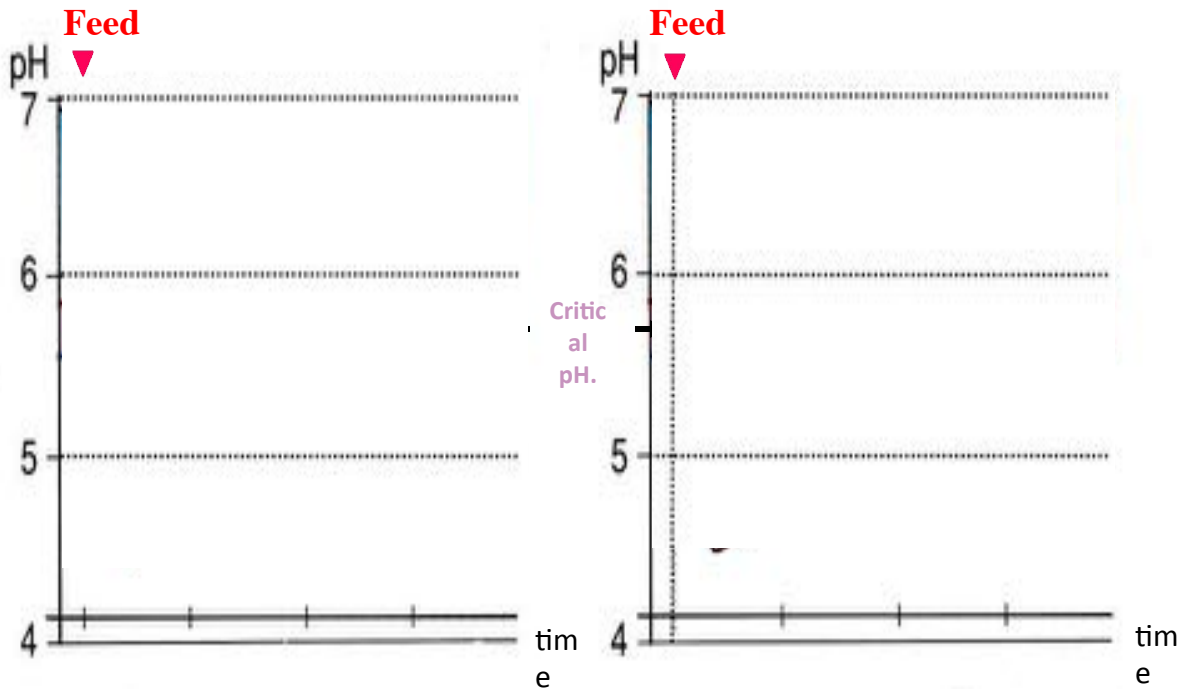


SUGAR + BACTERIA FROM PLAQUE = ACID



ACID + HEALTHY TOOTH = DECAY

# Stephan Curve



saliva volume(+)

buffering activity(+)

saliva clearance (+)

saliva volume(-)

buffering activity(-)

saliva clearance(-)

Scale : 20 minutes



# The stages of tooth decay



1 Healthy tooth with plaque

2 Decay in enamel

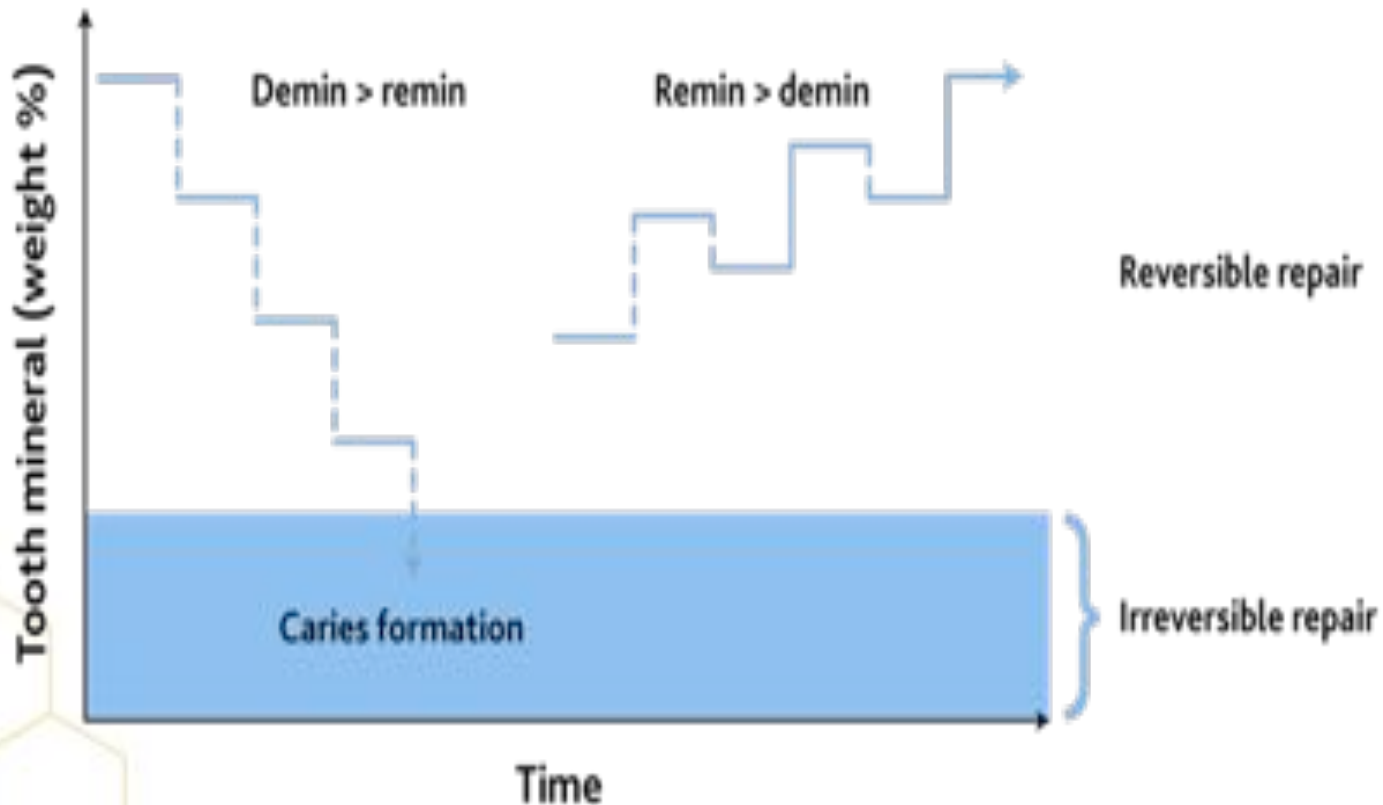


3 Decay in dentin

4 Decay in pulp

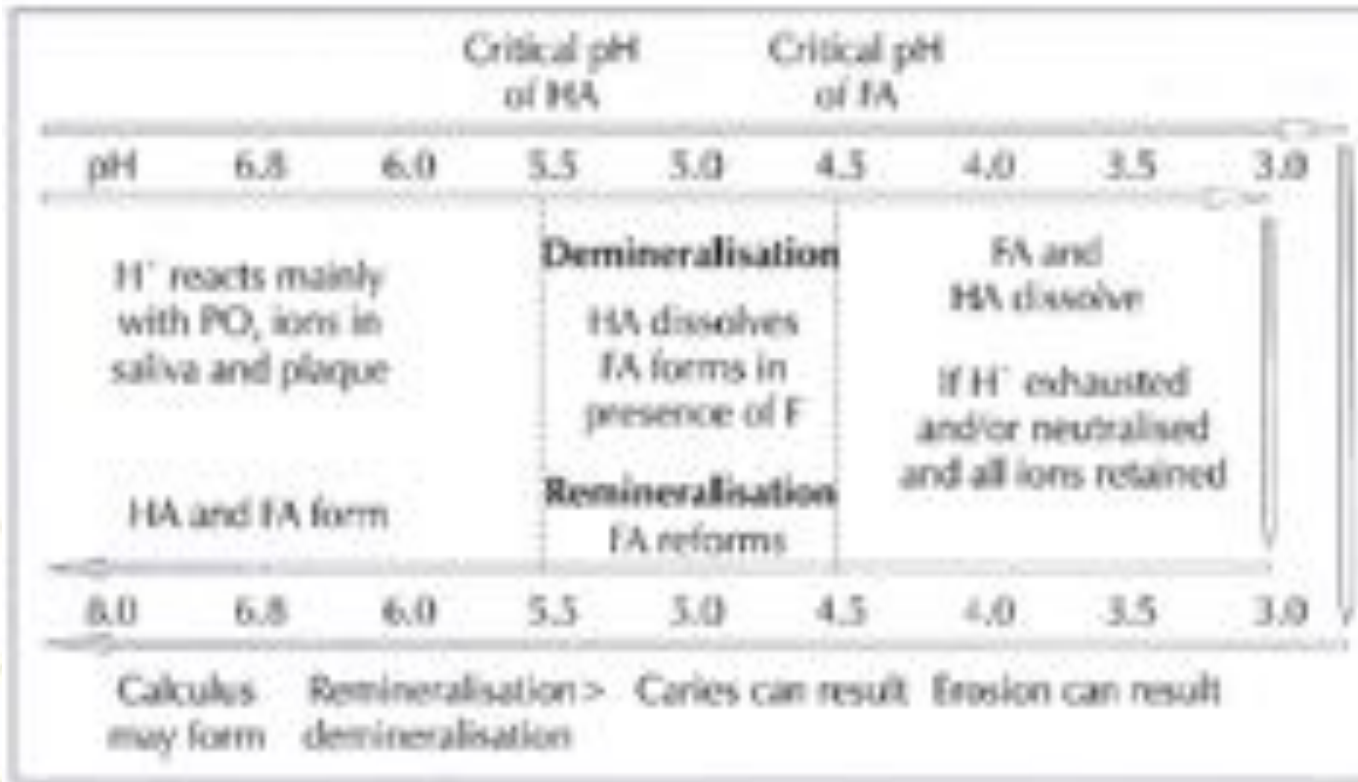


# Siklus Demineralisasi dan Remineralisasi



# Siklus Demineralisasi dan Remineralisasi

- 32 p. Hume GJ. Preservation and Restoration of Tooth Structure. 2nd ed. Queensland: Rob Watts; 2005. 22-





No whitening products used.

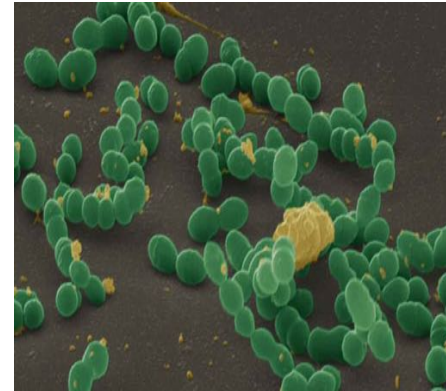
Results achieved after 2 weeks of using MI paste.



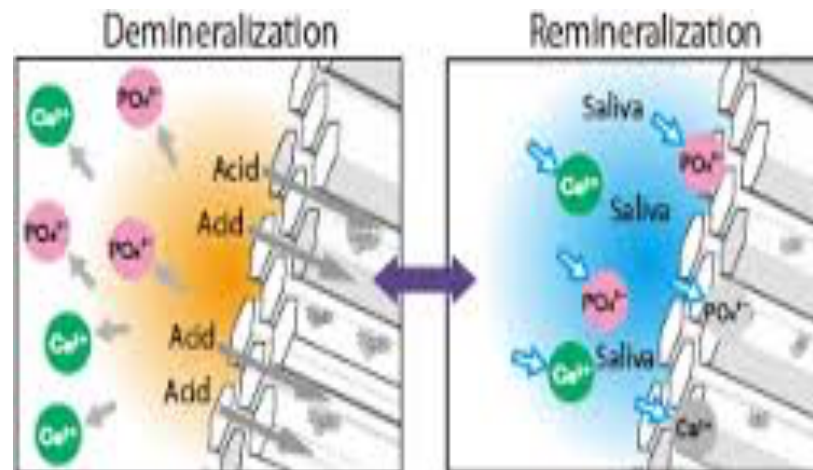
**Arrested caries**

# Pencegahan Karies melalui:

- Membunuh kuman penyebab karies *S. mutans*

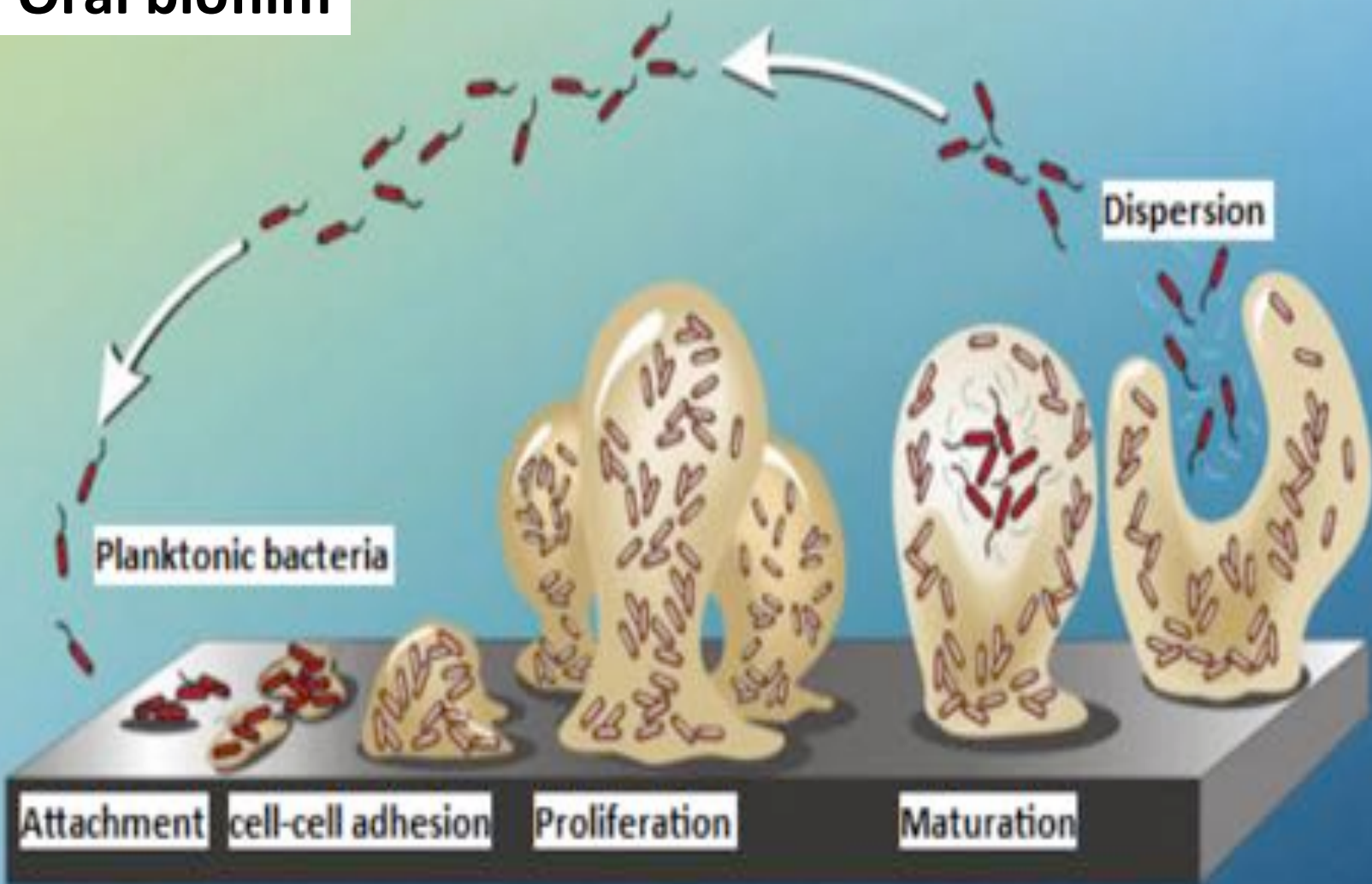


- Remineralisasi gigi yang telah mengalami demineralisasi (sebelum karies ada/berlanjut)





# Oral biofilm



# Metode riset daya hambat FLOLIS terhadap bakteri S. mutans



S mutans



FLOLIS



SDF

**KHBM**



**Daya hambat Biofilm**

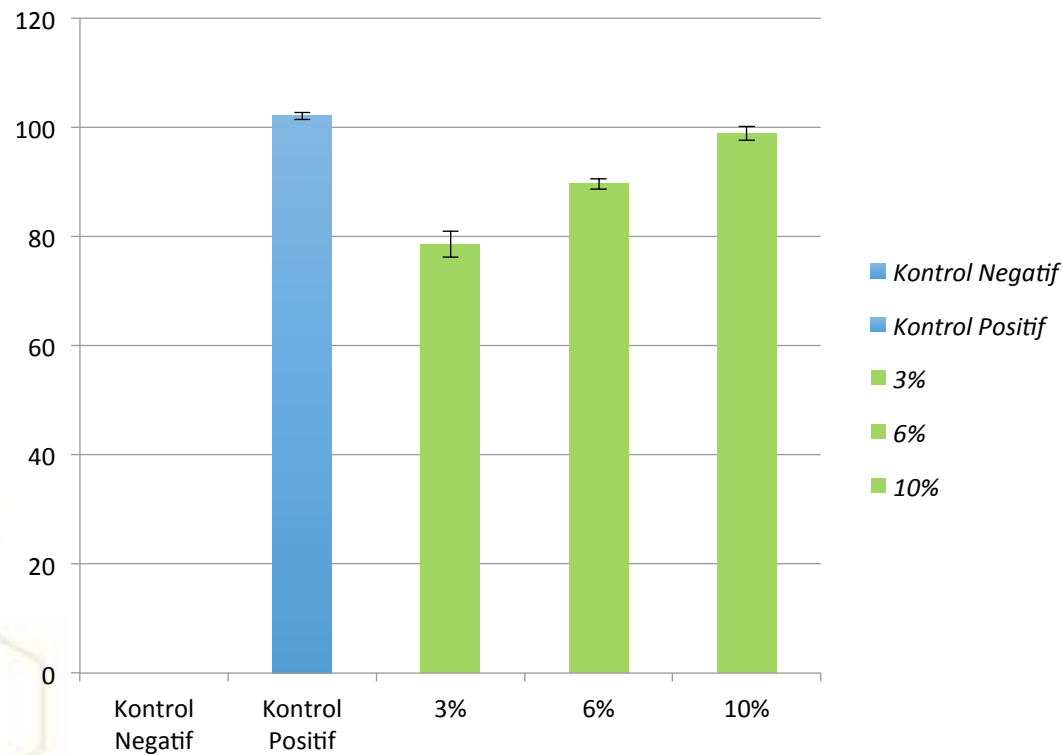


Microplate Reader



Kontrol, SDF, FLOLIS 3%, 6%, 10%

# Grafik Potensi FLOLIS Dalam Menghambat Biofilm *S.Mutans*



# Oral biofilm

**FLO  
LIS**

Dispersion

Planktonic bacteria

**FLO  
LIS**

Attachment

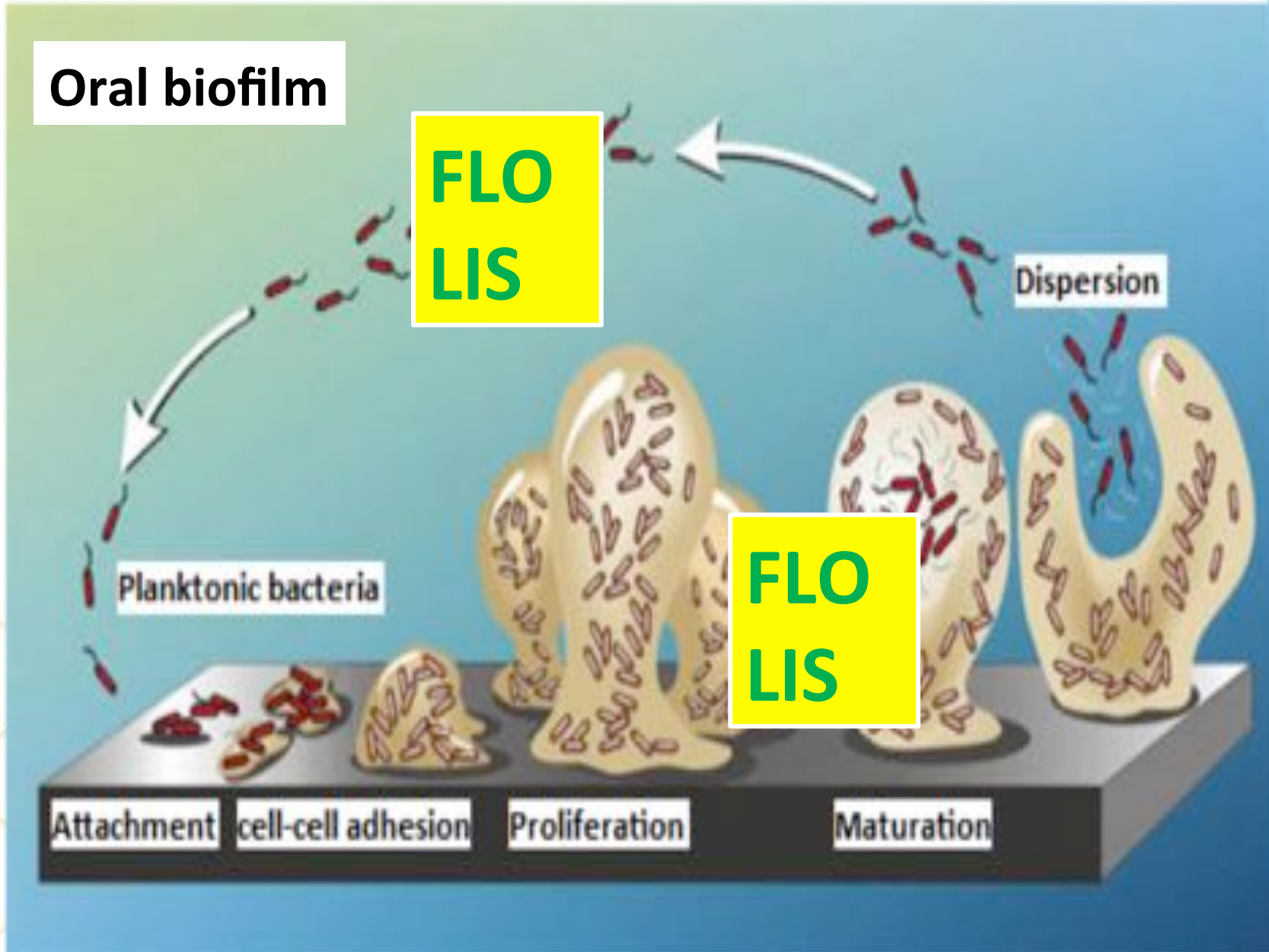
cell-cell adhesion

Proliferation

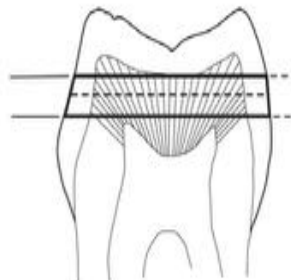
Maturation

**LIS**

PROPOLIS FLUORIDE



# Metode riset daya hambat FLOLIS terhadap Remineralisasi Gigi



Blok gigi



FLOLIS



SDF

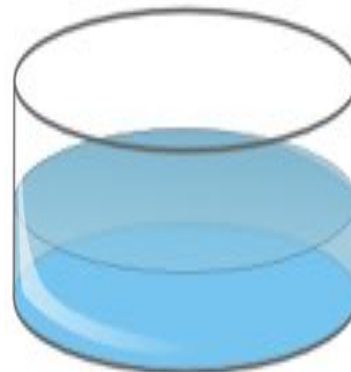


NSF

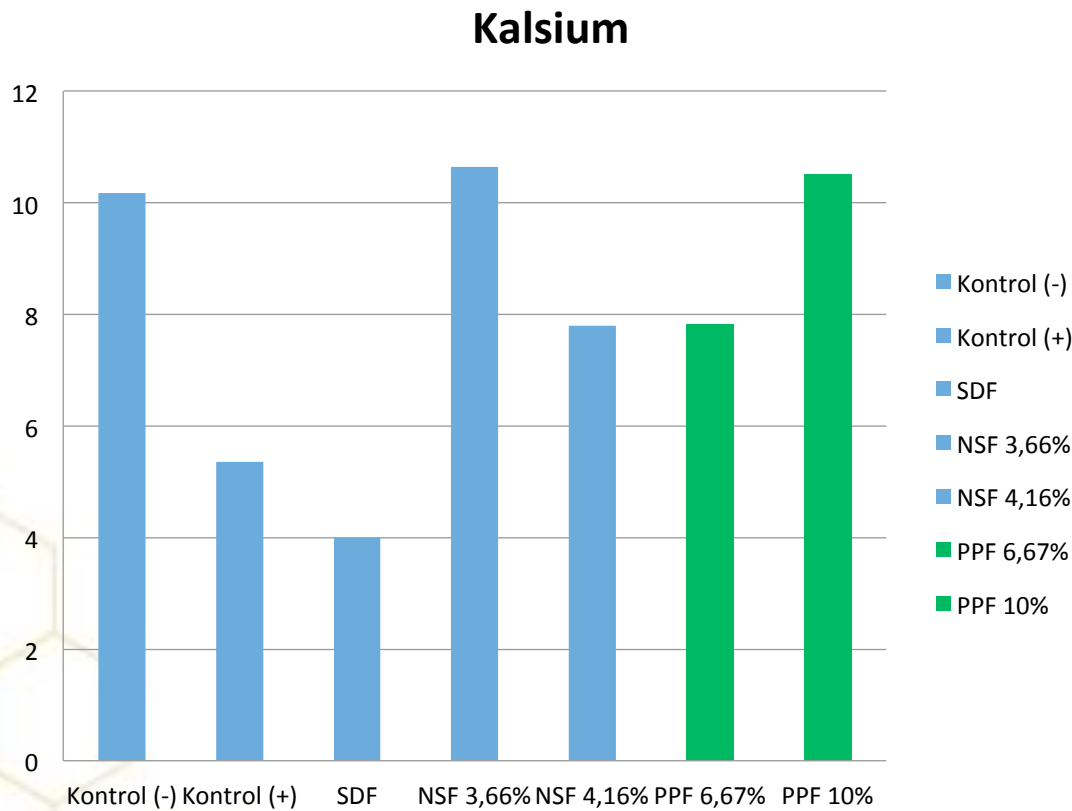
Rendam dalam saliva



demineralisasi

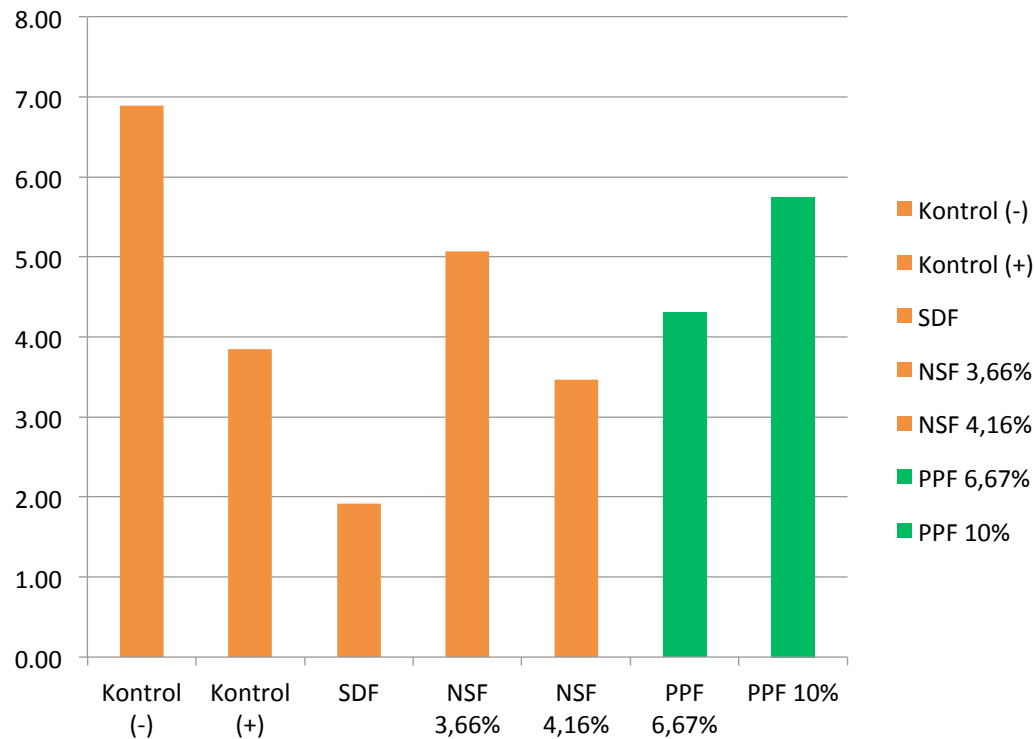


# Nilai Rerata Jumlah Ion Kalsium Pada Masing-masing Perlakuan

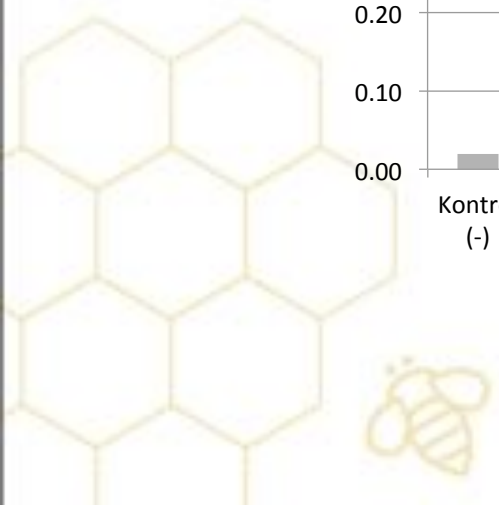
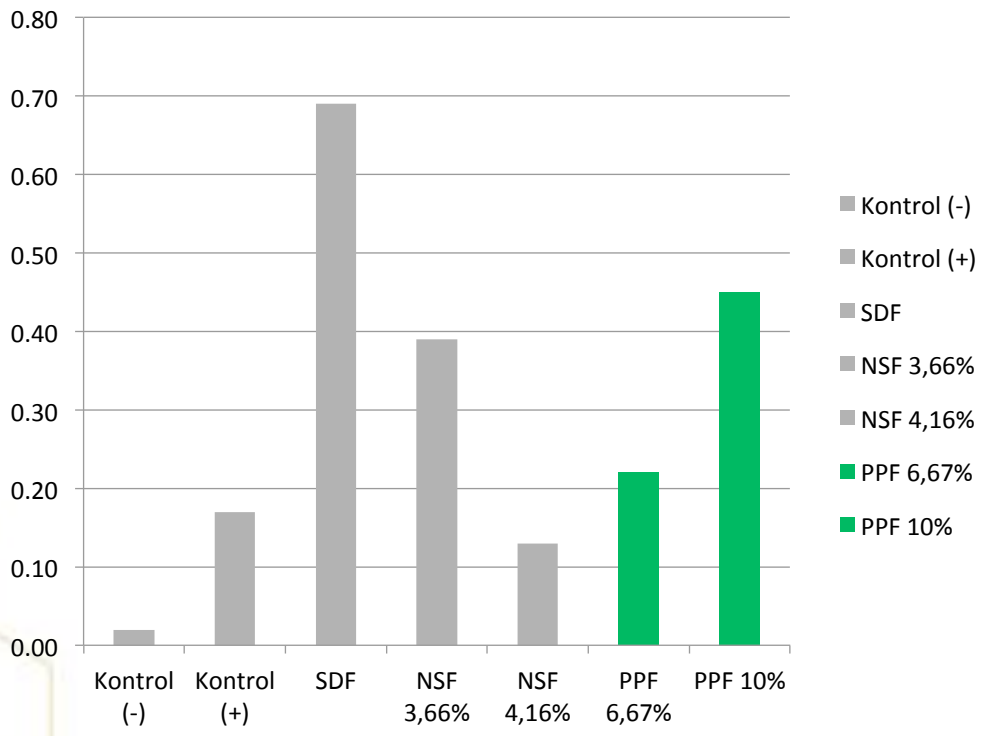


# Nilai Rerata Jumlah Ion Fosfat Pada Masing-masing Perlakuan

Fosfat



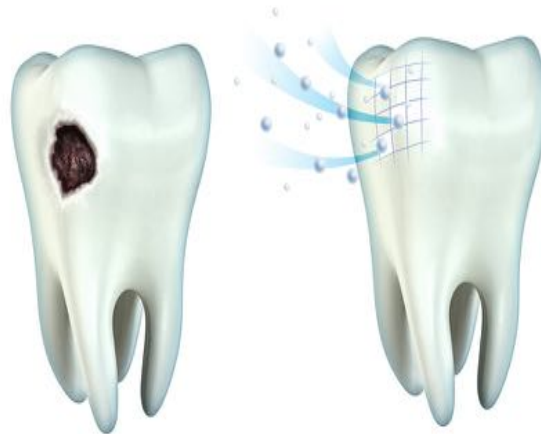
# Nilai Rerata Jumlah Ion Fluoride Pada Masing-masing Perlakuan Fluoride





# Kesimpulan Riset FLOLIS

- FLOLIS dapat menghambat bakteri *Streptococcus mutans*
- FLOLIS dapat remineralisasi gigi yang telah didemin



# TERIMA KASIH

